

JOIN IN NAMBOUR'S DISCOVERY WEEKEND

When > Saturday 6th May and Sunday 7th May from 9am to 3pm daily

Where > Nambour Museum, 18 Mitchell Street, Nambour

BUSINESSES OF YESTERYEAR

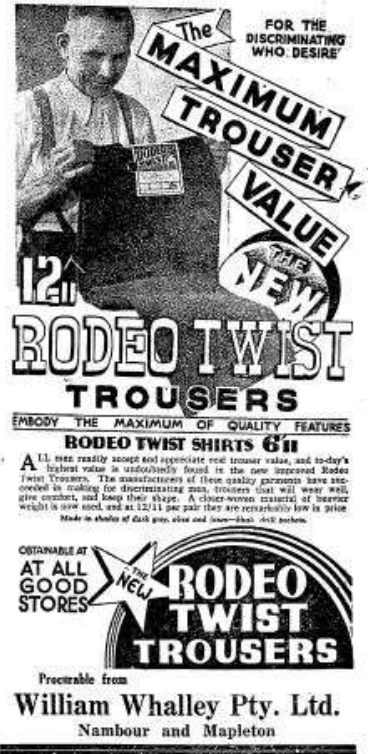


" WHERE'S WHALLEY? "

He may have gotten his knickers in a twist but we do know . . .

William Whalley and many others like him established fine businesses in town over the past 100 plus years

"Come along for the ride"



Need a nice cuppa at **Collins Café**, then hop on your Bosker from **Kents** and head down to Currie Street

Check out **Bayards, Lowes, Whalleys, Chadwicks, Penneys** and the many other iconic local shops and businesses while you're there



All the talk in recent times has been about the future of Nambour and its business heart following the closure of the Moreton Sugar Mill in 2003. Over the decades, the shopping precinct has continually evolved. Discovery Weekend provides an ideal opportunity for local residents and visitors to revisit the past and reflect on what was and what might be.

CELEBRATE NAMBOUR'S UNIQUE HERITAGE

Featuring

SPECIAL DISPLAYS AND SLIDE SHOWS

- Highlighting businesses and industries once synonymous with Nambour •
 - Take a closer look at the families behind the business names •
 - See reminders of old and once indispensable technologies •
 - Learn about the significance of downtown street names •

♥ Plus the usual blockbuster displays and exhibits ranging in size from pins to locomotives ♥



Let's explore

What little treasure will you discover?

NAMBOUR & DISTRICT HISTORIAL MUSEUM
18 Mitchell Street, Nambour

Admission : Adults \$4 and School Children \$1

Bring your family and friends for a memorable journey down town